

Home of The Tennessean to Open Next Monday

Week's Delay Decided on So That House May Be Put in Perfect Order

Outside of Building Completed, Lawn Being Rounded Off Under Expert Landscape Gardener.

With the outside finished, the lawn being rounded into shape under supervision of an experienced landscape gardener, the inside being ready for completion, and the furniture waiting to be moved in, The Tennessean Model Home, located in Green Hills, is almost ready for the grand opening next Sunday.

Supposed to open today, the Model Home will be thrown open to the public on Sunday. Delay in opening is for the inspection of the public was occasioned by inability to secure suitable draperies in time, and the need of touching up a few spots on the inside.

But Sunday, May 1, this "realization of the home-builder's dream" will be thrown open to the public and will remain open for five weeks. Agents will be on the ground every day to show all who desire to inspect the home its up-to-date features.

Modern in Every Sense.

Strictly modern in every sense, made of the most economical but still quality materials, and situated in the heart of Nashville's beautiful subdivision, The Tennessean Model Home is truly a model.

Constructed on the most approved lines, by plans supplied by the Home Builders' Service Institute of New York City, the home offers absolutely the best in every detail and approaches absolute perfection for a home.

Spacious rooms all through the house, including three bedrooms, tasteful decorations, appropriate furnishings, the bathroom with built-in tub, a strictly modern kitchen, ample cellar space, with room for the furnace and three automobiles, beautifully cared for grounds, and an ideal location—practically all a home-seeker could wish for—have been incorporated into this model home.

A medium, yet ample, sized tungalow, built-in brick with an attached garage, surrounded by beautiful shrubs, located on a circular drive that cuts through the heart of "The Plateau Overlooking the Knobs," that is The Tennessean Model Home.

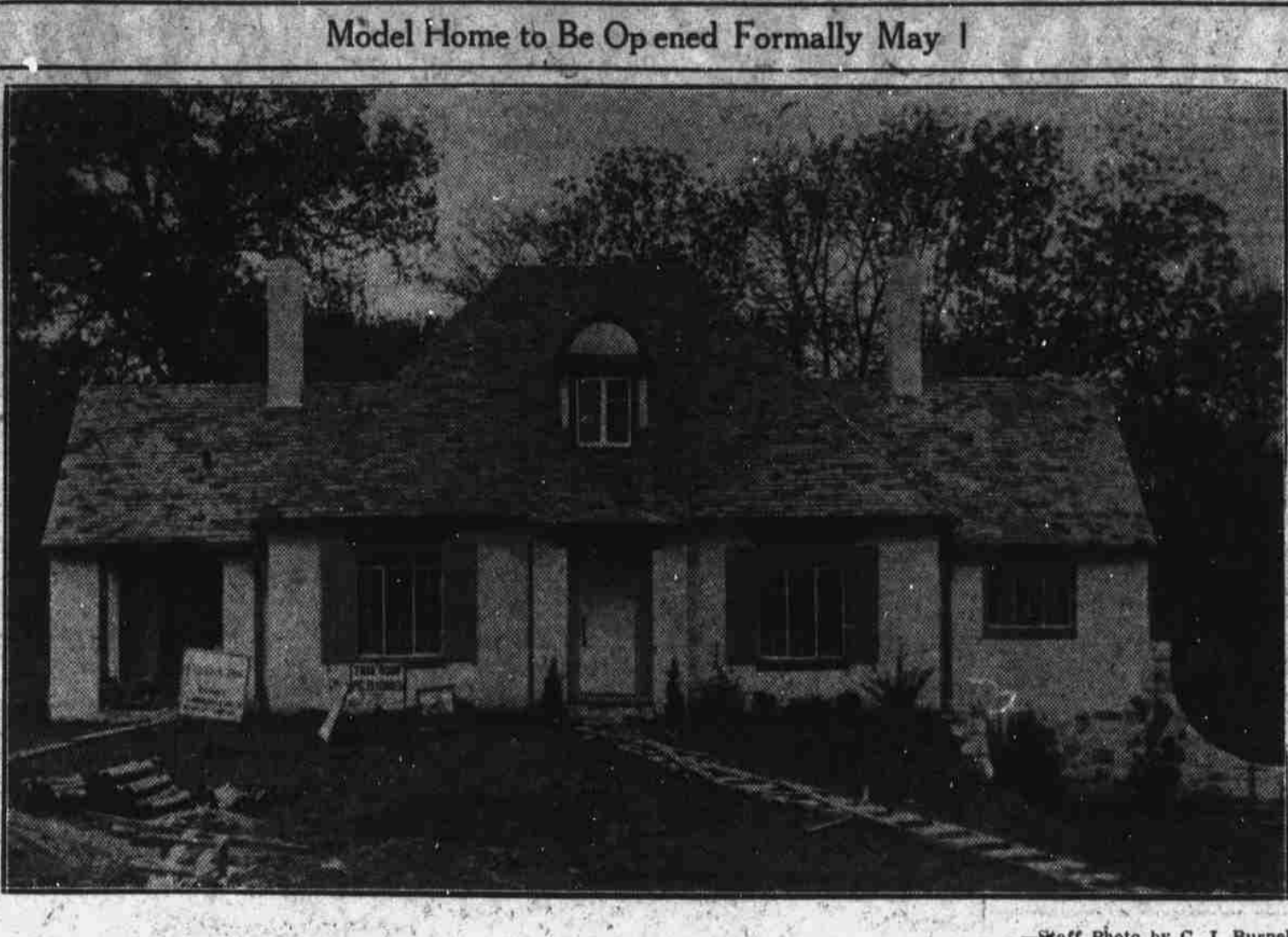
Out Belmont Boulevard.

Drive out Belmont boulevard, less than a mile from the city, look on the right side of the road for a high spot—far enough from town to lack a city's disadvantages, yet close enough to retain the good features—and you will find Green Hills.

Beautiful shade trees, luxuriant grass, tastefully laid out drives, good roads, ideal terracing, city water and electricity, conveniences to Nashville, a suburban atmosphere, all these features are incorporated in the subdivision owned by John Calhoun.

Located in the heart of this group of lots, The Tennessean Home presents a beautiful and comfortable picture. It is practically finished and everything will be in readiness for the formal reception which will mark its opening Sunday.

Mark your plans now to drive out and inspect not only the home but the home sites around it. You'll never regret it.



This is The Tennessean Model Home which will be opened to the public on Sunday May 1. Nashville contractors and building supply houses have furnished the quality materials of which it is made, and it has been constructed by Thomas J. Hall. The Model Home is situated in the heart of Green Hills, Nashville's most beautiful subdivision.

Model Home to Be Opened Formally May 1

Distinctive Roof Is Feature Of Today's Five - Room Design

Compact Interior Arrangement Keeps Waste Space to Minimum; Attic May Be Finished as Needed.

By L. PORTER MOORE, (President, Home Owners' Institute, Inc.)

Few architects have given closer thought to the many problems incident to the design of the small home than has Arthur Bates Lincoln, consulting architect of Home Owners' Institute, Inc. His mind is constantly occupied with the needs and desires, so far as modest houses go, of the family in moderate circumstances; in fact, he is so fully taken up with these problems that he has little time for original work. But every one who has been able to offer home-minded folks a new plan, and when he does that plan is worthy of careful consideration.

We are reproducing Mr. Lincoln's latest design today, Plan No. 254-S, a frame bungalow of five rooms, bath and porch. It is more than good looking; it fairly breathes the idea of "home," from the planked shutters, with the crescent moon cut in them to the sturdy chimney with its wisp of smoke.

The design has character. Note the entrance door with its interesting unbalanced treatment and seal on one side. The gables over the door and window break the severity of the roof, yet its area is such that it may be given a varicolored treatment that will greatly enhance the appeal of the house. At the same time the high pitch of the roof makes space in the attic available for future use if desired or as needed.

Casement Windows—Steel casement windows may be used at owner's option.

Plastering and Lathing—Three-coat work over metal lath is recommended. A less expensive job may be obtained through the use of one-half inch of plaster over flat rib expanded metal lath or even wood lath. We suggest you obtain alternative bids on metal lath and wood lath. Insulating turber or plaster board may be used if desired by owner.

Metal Work—Gutters, leaders, down spouts and flashing to be sixteen-ounce copper or No. 11 galvanized steel.

Roofing—Roof of variegated slate, slate surfaced or copper-clad shingles, to be laid in accordance with manufacturer's instructions. Color as selected. Asbestos cement or cedar shingles at owner's option.

Two Coats of Paint

Painting—Strictly pure white lead and linseed oil in proper proportion with zinc oxide when desired, for a good grade of ready mixed paint shall be used. Interior trim to receive two good coats of flat finish and one coat of flat enamel. Finished floors to be varnished or waxed throughout as directed.

Electrical Work—Complete system of electric wiring from meter to all outlets, including all panel boards, junction boxes and all other fittings. The installation must be in accordance with the rules and regulations of the National Board of Fire Underwriters.

Piping—A complete system and fixtures ready to use shall be provided as shown on plans and in accordance with local regulations. Color as selected. Gas or coal-fired hot water heater.

Tile Work—Tile work and wainscot on bathroom with built-in accessories.

Heating—Steam or hot water boiler, coal, oil or gas fired. Hot air at owner's option.

Temperature Control—Heat regulator with eight-day or one-day clock thermostat. Limit control of boiler or furnace and electric or spring motor.

Insulation—Throughout with insulating building board (or insulating quilting if preferred), used as a base on second floor ceiling, operate as roof insulation.

Compact Arrangement.

The all-in-one-floor interior arrangement is compact, five rooms, a bathroom and a minimum of so-called waste space; that is space given over to halls and stairways. One enters the living room through a vestibule in which there is a coat closet. The kitchen measures 12'6" x 10'6"; it has a fireplace and also entrances to hall and porch. Behind this room are the dining room and kitchen, with built-in china cabinet and kitchen cabinet, a wall through which a single opening is cut separates these rooms from the two bedrooms and the bath. Each chamber has cross ventilation and a good closet. There is a linen closet in the hall.

A forty-foot lot would accommodate this house, although a larger one would be preferable. The roof ridge walls are of shingles, the floor at the front entrance is of brick. The bungalow contains 26,000 cubic feet and can be built in the vicinity of New York City, according to the estimates of Mr. Lincoln, for a sum between \$8,000 and \$10,000, depending on whether or not the attic is finished.

Outline of recommended specifications follows:

Masonry—Concrete footings under all walls, as shown on drawings. All foundation walls to be poured concrete or concrete block made with Portland cement. Concrete to be mixed with waterproofing compound. Chimney of common brick, all flues lined or constructed with interlocking chimney brick, fireplace of selected brick. Provide ash dump with clean-out door in cellar.

Insulation—Built-in insulator installed in chimney with receiving hopper door located in or near the kitchen for disposal of garbage and trash.

Well Seasoned Lumber.

Carpentry—All framing lumber shall be well seasoned and free from large knots, either Douglas fir or yellow pine. California white pine for exterior mill work and interior trim; exterior wall of cedar shingles; oak. Steel bridging for floor joists, interior doors and built-in kitchen cabinet as required in detailed specifications.

Hardware—Owner shall furnish all finishing hardware for doors and windows, for closets and case-work. The contractor will furnish a correct list of hardware and is to put it on in a careful, workmanlike manner. All hardware on exterior openings to be of brass or bronze.

Home Is Described as Peace Insurance

During this week attention is being focused on the home. Better Homes Week began April 22. Everywhere the need and advantages of more and better homes is being emphasized. Officials of the movement draw attention to the home as "an outpost of American security, one of the best forms of insurance we can have with which to protect our peace and prosperity."

If China was as rich in homes as this nation, these officials point out, revolution would be slow to blaze. If Russian home standards were on a par with ours, demoralization would not have continued so long and might not have been permitted.

The nations with the most homes go ahead the fastest, just as the communities with high percentages of home ownership are cleaner, morally and stronger financially than cities and towns where ownership is comparatively low.

REALTORS PROTECTING BUYERS

Louisville real estate men want better small homes built on their developments. To that end they are planning some efficient method of grading all small homes constructed by speculative builders so that the purchaser may to a greater degree than ever before know just about the kind of home he is getting for his money.

The Stone House

By JOHN EMMETT

Hildegarde and I—whispered this not in Avalon—admire Andrew Jackson for the Hermitage rather than the Hermitage for Andrew Jackson. It might be said, "your bridal attire was made there last week, finding peace and beauty which warmed the soul. Were we ignorant entirely of Andrew Jackson, (and who could live in utter darkness?) the Hermitage itself, aside from all relics and hushed tones of veneration, would have impressed us with its greatness.

It is blooming in the garden, and this holly tree clung proudly to the berries which have graced it for several months. "Do you know," I might have said, "your bridal attire may be exquisite, something old, something new, and all that, but my charms last longer. But the holly tree in its everyday dress, as gentlemanly as the general himself, and so such remark was made.

After we had made our tour of the mansion, I stood in the room of the dining table and chairs. "That January 8th," Hildegarde remarked, and I hurriedly looked about to see that she would not be overheard, "is a day of effort. Aside from that the room is perfect. And don't you think we can someday find a banquet table?"

"Right now, Hildegarde, I am not concerned with finding something to put on the table we have." And we turned and went into the garden.

Hill transformed into "Angora Heights."

There's the sprightliness of "Hiltoot," the hospitality and quiet of "Glen Eden Place," although I am against places, as a rule.

"Eminence" is called by its location rather than the status of its occupants. And "Le Refuge" is a hermitage on a smaller scale.

"What in the world are you thinking of?" Hildegarde demanded. "You've been silent for fifteen minutes. See that road to the left? I want you to drive down that way; we might discover something."

It was a fruitless quest. Antiques, alas, are seldom discovered grazing lordships so near the highway.

Aunt Sophronia's underwear for the hooked rugs has arrived, and we are praying that a cold spell will not come to make her regret her generosity. I insist that I shall write her we are dyeing her garments into red and green, to make a wreath of posies. We can then point to the rug, and say, "I apologize, and I sit down to write her to come and visit us."

POOR HOUSE CONDITIONS RESPONSIBLE FOR UNREST

Led to Weakness in England's Social System.

Industrial leaders throughout England no longer question the claim of the economists that the vile housing conditions which have long been the curse of the industrial centers have been directly responsible for the development and unrest that today has become the paramount weakness in the country's economic and social system.

To the credit, however, of these are losing no time in directing their energies to a correction of the evil.

Conditions in the industrial centers of England and America in general are vastly different. Yet in some instances they are very much alike. English industrial companies in most cases provide the homes for their workmen, on rental basis. It is an exception to the rule where such a condition does not exist. It is different in America, where many workmen own their homes. Frequently these are far removed from the mills and factories.

Folding Breakfast Nook For Every Home Urged

We have come to look upon the breakfast nook as a necessary piece of home equipment. It is one of the first things women ask about when they are inspecting a home with the thought of purchase; it is one of the first things we show our friends when they call on us in our new home.

Realizing that this desire for breakfast alcoves was felt by people living in homes built before the vogue for the charming nooks "came in," as well as by those who have purchased homes that did not include them, one manufacturer has put on the market a folding breakfast nook that can be built in to almost any home.

This installation produces a complete breakfast alcove from the walls almost like magic. A moment or two and seats, benches and table unfold from beautiful panels in the wall. This equipment will accommodate four or five people in comfort. It can be installed for the manufacturer has issued an attractive folder which, in word and illustration, shows just how this folding breakfast nook appears. A copy will be sent to you if you will request a copy of "An Innovation in Built-in Furniture" from the editor of this page.

COLONIAL KITCHEN IDEAL

Great importance is now attached to color in the kitchen. If we look back two centuries or more to the kitchen of Colonial times, with its "checkered slings" a vivid picture is brought to many minds.

NEW WHITE PAINT IS VERY DURABLE

Comes in Paste or Ready Mixed Form; Hiding Power Notable.

It has been said that paint making was first an art, then a science, but has now become a trick. Paint has been used since the earliest recorded time but it has taken modern science to bring it to its present state of usefulness and beauty. Year after year of testing and experimenting have been capped by the development of a white paint made of zinc oxide, alabaster and inert, such as silica and asbestos. The combination produces a brilliant white paint that stays white, regardless of where it is used. When this paint is tinted, the tints are clearer, brighter and more permanent than in many paints because of the whiteness of the paint base.

Sulphide fumes do not affect this paint. It "chalks" gradually, as good paint should, leaving an excellent surface for repainting. It spreads well, either over a bare surface or on top of old paint, this saving time for the painter. It is very durable.

These facts have been established beyond the slightest question both through laboratory tests and by actual use. Thousands of gallons were used by the maker on buildings before it was offered to the public. Since then large quantities have been sold to home buyers and builders.

A brief analysis of the materials used in this paint will help us to understand why it has such high efficiency.

Alabaster is an improved lithopone. It is a dazzling white compound which light does not affect. It also possesses remarkable "hiding power."

Zinc oxide is free from detrimental impurities. Leading authorities agree that if oxide of zinc had not been introduced as a pigment there would have been no exterior painted paint as we know it today. It has a clear white color. It does not yield a dark sulphide when exposed to hydrogen sulphide. It carries a high percentage of oil in the finished paint. When properly used, it is very durable. It also chinks that defers chalking, thus lengthening the life of the paint. It gives the paint film a surface that rejects dirt. On account of its fine texture, system, it is the finest white pigment in house paint. It blends completely with the linseed oil, giving a smooth, hard surface to the paint.

Asbestos and silica are technically known as inert. Their function is to add durability and to furnish greater resistance to abrasion. They, too, as well as the alabaster and zinc oxide, are non-darkening.

Added to this pigment combination is the liquid vehicle. Only the best grades of pure linseed oil are used, with the necessary small quantities of liquid drier and turpentine, 5 per cent of each.

More than 100 authorized paint manufacturers sell this paint through regular wholesale and retail paint dealers. Every can bears the distinctive label of the company that makes it, and in addition a trade-mark which is registered and owned by the original manufacturer. It is made in paste form, for the use of those who prefer to mix their own paint, and as a ready-mixed paint for general domestic use. The concern which first developed this product has prepared a booklet which gives much valuable painting information. The booklet is entitled "A Tested First Grade Paint." Copy will be sent upon request to the editor.

WARM WEATHER TURNS THOUGHTS TO FLOWERS

Many Varieties Available for those Seeking Beauty.

The blue flowers offer less variety than the reds and yellows. Bachelor's buttons and petunias are two which give a pleasant contrast, and both will produce some white blossoms to cheer the gardener who wants more light-colored annuals. Pansies along the borders will contribute some blue and purple lights. Asters are invaluable for the shades of lavender and purple which they introduce into the preponderant yellow tones.

The cosmos and African marigolds will grow to a greater height than most other annuals, and these will look best if grouped near the middle of your garden. Calliopsis and bachelor's buttons also attain a stalk growth of several feet, and these may be ranged alongside the others.

Pure Water for Home Use Is an Essential

Pure water for drinking, cooking and bathing is essential to good health. Most cities spend thousands of dollars to bring pure water to the home owner's door. It must retain this purity in its passage through the house plumbing.

Rust in plumbing pipe discolors water, making it unpleasant and unwholesome. Brass pipes cannot rust and will deliver a full flow of clear water as pure as at its source. It will remain a hidden protector of your family's health and comfort as long as your house stands. Equipping a \$15,000 house with brass pipe adds only about \$75 to the cost.

Gave Color Note To Summer Porch With Linoleum

Gorgeous porches are blossoming in places that were ordinary prosaic porches. Many a quiet, warm outside nook is being endowed with all the comforts of the room inside. Seldom used porches are being transformed, at slight expense, into delightful retreats, popular with the whole family.

"Nothing will more thoroughly glorify the porch than the grid covering on the floor," according to the very interesting handbook of home decorating, "Creating a Charming Home" by Laura Hale Shipman. A wide variety of tile patterns in both mottled and solid colors are available in inlaid linoleum and are indeed most appropriate. They have the special advantage of combining well with a great assortment of painted, wicker or wrought iron furniture.

Grass, reed, fiber or coco matting rugs over such linoleum floors will help to complete furnishings and lend that cool, informal outdoor atmosphere so much desired in porch furnishings.

The wall of a porch is most likely stucco, brick or wood; so we add a bit of lattice in squares, oblongs or fan shape. When we paint the lattice we take our cue from the inlaid linoleum floor and select a color either in direct contrast with or the same as the dominating color of the linoleum.

For furniture we will place only sturdy pieces, either wicker or painted wood, or iron. And we'll not bother to have them "match." If the chairs are not new looking, or if we want them cheery in color, we can go over them with the new quick-drying lacquer.

For upholstery and pillows we can use canvas with orange and brown or green stripes. If there's place for curtains we'll get some

Minimum of Waste Space in This Small House

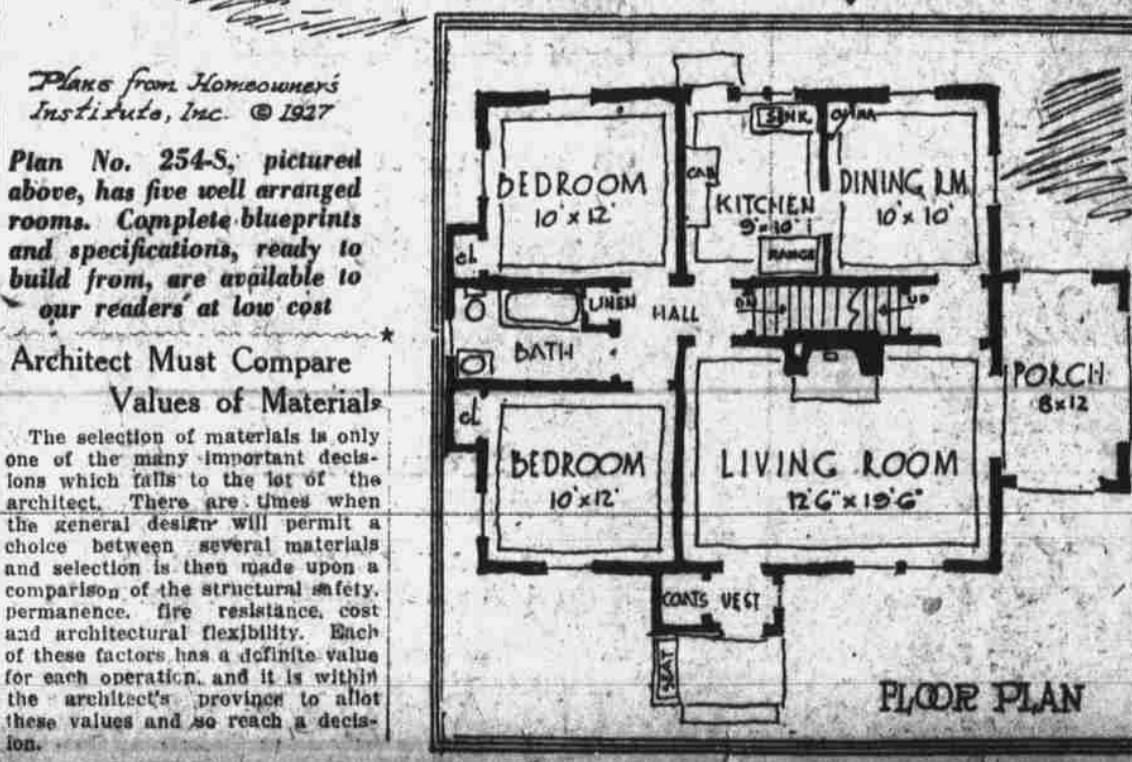
Plan No. 254-S

Plans from Homeowners' Institute, Inc. © 1927

Plan No. 254-S, pictured above, has five well arranged rooms. Complete blueprints and specifications, ready to build from, are available to our readers at low cost.

Architect Must Compare Values of Materials

The selection of materials is only one of the many important decisions which falls to the lot of the architect. There are times when the general designer will permit a choice between several materials and selection is then made upon a comparison of the structural safety, permanence, fire resistance, cost and architectural flexibility. Each of these factors has a definite value for each operation, and it is within the architect's province to allot these values and so reach a decision.



See in advance how the roof will look on your home

The day of the drab roof has gone. You can build into your roof beautiful new roofing colors like those used on The Tennessean Model Home. There are also many other charming effects possible to secure in the Richardson Multicrome Roof.

You can see these colors for yourself at our office. By a special device we can show you in advance just how the different Richardson Multicrome Roofs will look on the particular home you have in mind.

The Richardson Multicrome Roof, as you will also notice, is 50% thicker; extra large, extra heavy built on a long-fibre Richardson Felt base, water-proofed with Viskit. Thus, it will make a permanent weather armor for your home, besides giving it new beauty.

Come in today and talk over your building problems with us. Or telephone, if more convenient.

Phillips & Quarles Hardware Co.
323 BROADWAY