

TENNESSEAN MODEL HOME WILL OPEN TODAY

USE OF EVERLASTING METALS SAVES MONEY

Copper, Brass and Bronze for Roofs.

As the sea wall resists the waves, so copper brass and bronze protect against the corroding effect of moisture in and about the home. Rain, fog, dampness and water pipes soon rust corroding metals. A house that has copper roofing materials, brass pipe, brass or bronze hardware and lighting fixtures and bronze or copper insect screen cloth, is equipped with metals that last. Replacement of corroding metals is expensive. The protection of copper, brass and bronze is within the means of every home owner. You pay for it only once.

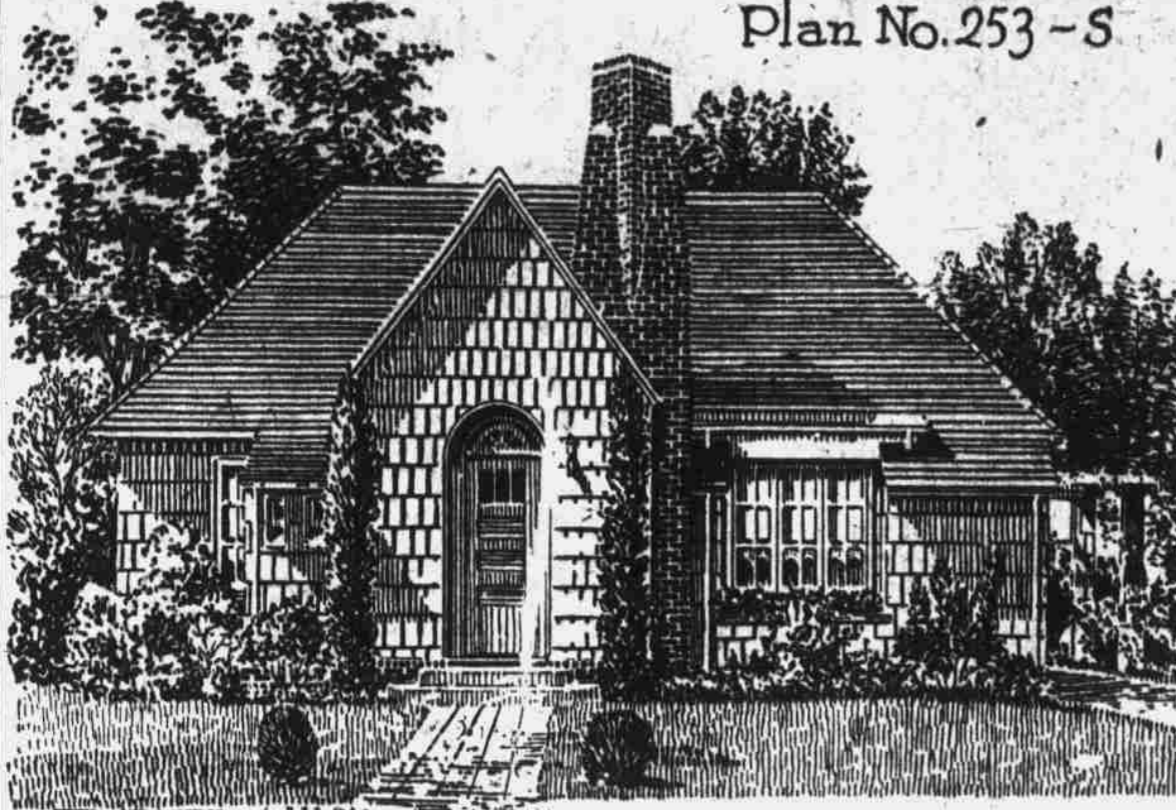
Gas Refrigeration Makes Cold From Heat

Refrigeration, like all necessities, has not been standing still. It has shifted from frozen water through the intricacies of great manufacturing plants, to a new scene, no farther from home than your own kitchen. The latest step in ice evolution is the gas refrigerator, which does the seemingly paradoxical thing of making cold from heat. By a simple process of absorption of heat through evaporation, the new refrigerator is able to produce a cooling equivalent to seventy-five pounds of ice a day.

JOIN B. & L. ASSOCIATION. Throughout the United States there are nearly 13,000 buildings and loan associations, large and small, helping millions of families to acquire homes. Join one of these and begin your journey to financial freedom.

Five Well Arranged Rooms in This Bungalow

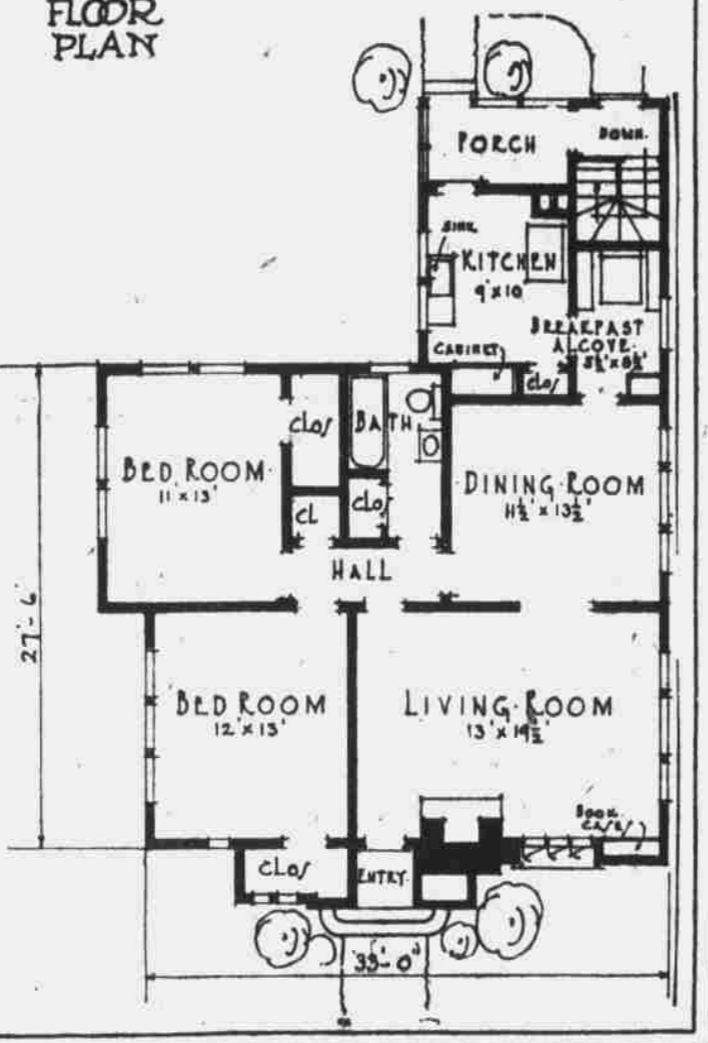
Plan No. 253-S



Plans from Homeowner's Institute, Inc. ©1927

Originally designed by the Long Bell Lumber Co., this bungalow, plan No. 253-S, has proved popular with small home builders. Complete blueprints and specifications, ready to build from, are available to our readers at low cost.

FLOOR PLAN



Popular Bungalow Plan That Is Economical to Construct

Gabled Doorway and Arched Entrance of Today's Design Are Good Features; Has Five Rooms.

BY L. PORTER MOORE, President Home Owners' Institute, Inc. With public attention centering on National Garden Week, Arbor Day observances and reforestation, it is appropriate, perhaps, to feature this week a small house of wood, a bungalow design that appeals to me as having both charm and individuality. It is Plan No. 253-S, created

originally by the Long Bell Lumber company, and will appeal to many home seekers. I am sure, for it is popular, practical and economical to construct, and it may be built on a forty-foot plot, although a larger lot would be desirable. As a building material for residences, wood has a flexibility and responsiveness that makes it almost ideal for such architecture; it seems to lend itself to "homey" construction. As the color scheme of the wooden house may be easily and frequently changed by the application of paint or stain there is never danger that such a house will become monotonous or out of tune with its surroundings. The architecture of this design is unusual with the gabled doorway, arched entrance, and the low sloping roof lines. The mass of brick chimney adds much to the interest of the front elevation. The shingled roof offers opportunity for a distinctive color treatment.

Compact and Convenient. The floor plan shows a compact and convenient arrangement of floor space of the five rooms, and provides a breakfast alcove in addition to the dining room. One enters the living room through an entry and the fireplace is just to the right; between the windows in the corner, there are built-in book shelves. The breakfast nook is between the dining room and kitchen and has a window of its own. The kitchen is well equipped with modern labor savers.

Both the sleeping rooms have cross ventilation and are close to the bath. There are a number of closets, every one really big enough to use, the one in the front bedroom being as large as a dressing room and provided with two windows. At the rear of the house there is a porch from which access is had to the cellar.

The house contains about 17,000 cubic feet. It can be built, according to the estimates of Arthur Bates Lincoln, consulting architect of Home Owners' Institute, in the vicinity of New York City for approximately \$8,500.

Specifications Outlined.

Outline of recommended specifications follows:

Masonry—Concrete footings under all walls, as shown on drawings. All foundation walls to be poured concrete or concrete block and Portland cement. Concrete to be mixed with waterproofing compound. Chimney of common brick, all flues lined or constructed with interlocking chimney brick, fireplace of selected brick. Provide ash dump with clear-out door in cellar.

Incinerator—Built-in incinerator installed in chimney with receiving hopper door located in or near the kitchen for disposal of garbage and trash at the owner's option.

Carpentry—All framing lumber shall be well seasoned and free from large knots, either Douglas fir or yellow pine. Exterior walls finished with cedar shingles. California white pine for exterior mill work and interior trim; oak floors. Steel bridging for floor joists. Interior doors and built-in kitchen

Finishing Touches Put on Exhibit House Now Ready for Inspection

Many Business Concern Cooperate to Make Success of Building in Beautiful Green Hills.

The Tennessee Model Home is finished.

Today, throngs of Nashville people are expected to visit Green Hills and see the Model home—the realization of a dream which would incorporate all the best features of many homes.

Constructed under supervision of Thomas J. Haile, Jr., builder, the model home had most of the finishing touches put on Saturday. The roomy little bungalow, built according to specifications furnished by the Home Owners' Service Institute of New York City, the materials and work furnished by Nashville contractors, and the furnishings supplied by Nashville firms, is ready for inspection.

Located on one of the highest and most beautiful lots in Green Hills, John Cathoun's new subdivision, "The Plateau Overlooking the Knobs," the model home presents a beautiful picture from any angle.

Brick Painted Cream. Made of brick, finished in cream paint to give it an antique atmosphere, the model home sits in the tip of the horseshoe bend made by Observatory Drive.

Critically planned grounds, set with shrubs, surround the house, which sits back on a terraced lawn. All that is good in the landscape gardener's art has been put into the arrangement of the grounds around the model home by Ridley Goodpasture, landscape architect of McMinnville, Tenn.

The living room, with walls finished in plaster with mottled shading, which grows lighter as it nears the ceiling, is beautifully furnished. Sterchi Brothers Furniture Co. supplied the furnishings for this room, as well as for the dining room and servants' quarters. The dining room, also finished in mottled plaster, is artistically furnished by the same firm, while Jensen and Jeck, local jewelers, have supplied over \$1,000 worth of silver for use there.

The breakfast room, conveniently located by the kitchen, is tastefully decorated, and beautifully furnished by the Hilary E. Howse Furniture, which supplied the furnishings for one of the bedrooms also.

The bedrooms, all finished in cheerfully colored paper, have been furnished by Harley Moore

Furniture Co., Hilary E. Howse Furniture Co., and the Banner Furniture Co.; while Thompson and Co. are supply all linen used in the decorating of the house.

Keith-Simmons Hardware Company is furnishing all the kitchen equipment, with the exception of the electric range and refrigerator, which is furnished by the Nashville Railway & Light Company. Sterchi Bros. furnished the servants' room in the basement.

The whole interior, decorated under the supervision of R. W. Schrick, interior decorator of Sterchi Bros., is tastefully furnished. Brio-abrac to go in various nooks and corners about the home has been supplied by Mills Gift Shop, while Jensen & Jeck has supplied a clock. Beautiful andirons grace the big log fireplace in the living room, and china set about the house gives it a home-like atmosphere. Phillips & Buttorff furnished the andirons and china. Oil paintings, furnished by Miss Ella Donelson, are hung about the walls. Keith-Simmons has also furnished a radio.

In the basement, servants' quarters and laundry and a garage accommodating two cars have been arranged so as to get the most convenience out of the available space.

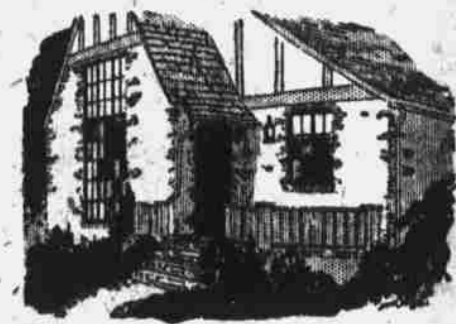
A modern incinerator, for disposal of garbage, has been supplied by the Phillips & Buttorff Manufacturing Company.

The Chamberlain Metal Weatherstrip Company has furnished the metal weatherstrips used to line the windows, while the Sterchi Bros. casements and roll screens were supplied by the Ryan Sales Company.

Bush Brick Company supplied the brick work, J. O. Kirkpatrick & Sons furnished the lumber, Celotex and millwork, Phillips & Buttorff furnished the roof and hardware, Hunter-Letwich supplied the crane service and did the excavating, Bailey Hayes did the plumbing and heating, W. S. Sheffield did the plastering, John Jones the screen doors, etc.; R. A. Randolph, Sr., the paper-hanging; Corlies Little Shop the hardwood flooring, Andrew Jackl son the painting, and H. E. Farmer, the tile work and guttering.

The Riddle Company furnished the electric fixtures, through Braid Electric Company, while lamp shades were supplied by Johnson's

Lamp Shop and by the Macbeth-Evans Glass Company of Atlanta. The Hilary E. Howse Furniture Company furnished the linoleum, while Sterchi Bros. furnished the window shades and the Nashville Sash & Door Company the Miraclo doors which form an integral part of the building. If you do not have an opportunity to visit the Model Home today, drive out any time during the week and see what the Tennesseean, Nashville contractors, Nashville furniture dealers and the best architectural minds of the country have accomplished in their effort to construct a model for future home builders. The American Trust Company's loan department made the financial arrangements.



Through model homes here and in other leading cities, builders and home owners are now learning to know the charm and convenience of

Fenestra CASEMENTS

steel windows that—

- 1 Never warp or stick; open easily to catch the gentlest breeze; close storm-tight; shut out the sudden showers.
- 2 Never rattle when open or closed—never keep you awake at night.
- 3 Are always kept spotless because they are so easily washed from the inside.
- 4 Protect the daintiest draperies with inside screens—less washing, less wear on your curtains.
- 5 Last for ages because built of enduring steel—extra fire resistance for your home.

BETTER WINDOWS, yet you can easily afford them, for they represent only about two per cent of the cost of your home. Windows, too, that are easily available in Louisville.

Ryan Sales Company
1122 Stahlman Building

M. C. JENSEN J. H. JECK
C. N. ROLFE W. W. BENZ

Gorham Silver Plate

IN the VANITY FAIR pattern Gorham master craftsmen have combined the spirit of the Early American period with the spirit of the present.

Jensen & Jeck Co.

"Superior Service"

602-604 Church Street
Nashville, Tenn.

We Offer The Tennessee Model Home For Sale

Ask one of our sales representatives.

NASHVILLE TRUST CO.

Realtors—Exclusive Agents.
Real Estate Dept.

FRANK B. WELCH, Mgr.

315 Union St.

Phone 6-0167.

The Model Home Was Built

By

Thos. J. Haile Jr.

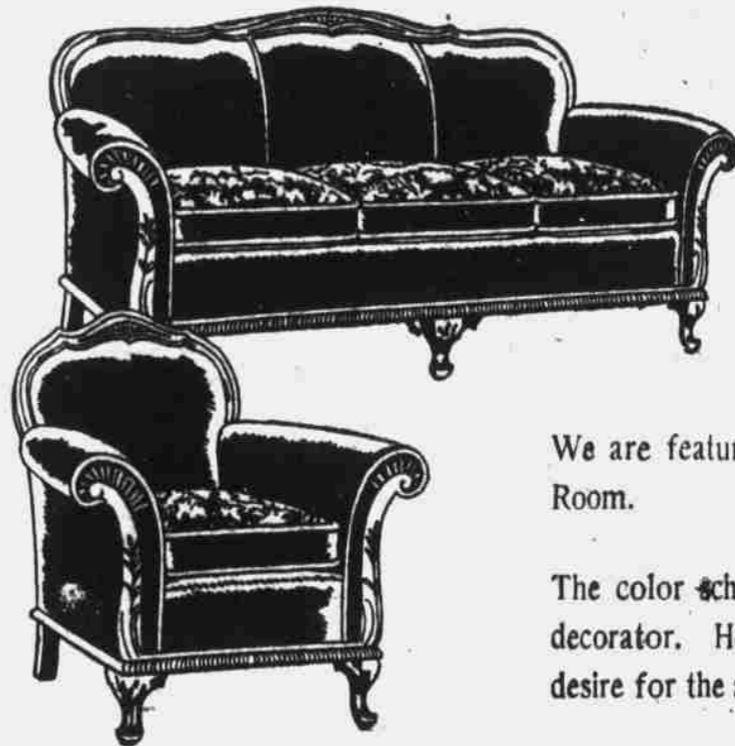
Home Builder and General Contractor

Presbyterian Building

Phone 6-7386

STERCHI'S

If you visit the Model Home Sunday it will be a pleasure to show you our attractive arrangements in the Living Room, Dining Room and Servants' Quarters.



This Is Karpen Week

We are featuring many of their pieces in our Model Living Room.

The color scheme and setting was arranged by our interior decorator. He will be glad to give you any help you may desire for the arrangement of your home.

Tontine Shades Used In Model Home

Dupont Tontine shade cloth was chosen for the Model Home on its merits of durability, long-life and easy to keep clean.

We have it in many fast colors, fully guarantee it to give you satisfaction. A demonstration will convince you.



WATER-PROOF

WASHABLE

WILL NOT PINHOLE.

WILL NOT CRACK.

WILL NOT CURL.

Guaranteed Fast Colors

Call Us for Estimate

Phone 6-4922

Sterchi Bros. Furniture Co.

213 THIRD AVE., N.

"IT COSTS LESS AT STERCHI'S"

TELEPHONE 6-5284

(Continued on Next Page)